

ABOUT MASHIDA HOLDINGS (M) SDN BHD

Mashida Holdings (M) Sdn Bhd – The distributor of Mashida alkaline drinking water solution carries a mission to provide healthier, higher quality drinking water that is ideal for all mankind in all living environment in Malaysia, including residential, corporate offices, factories, etc.

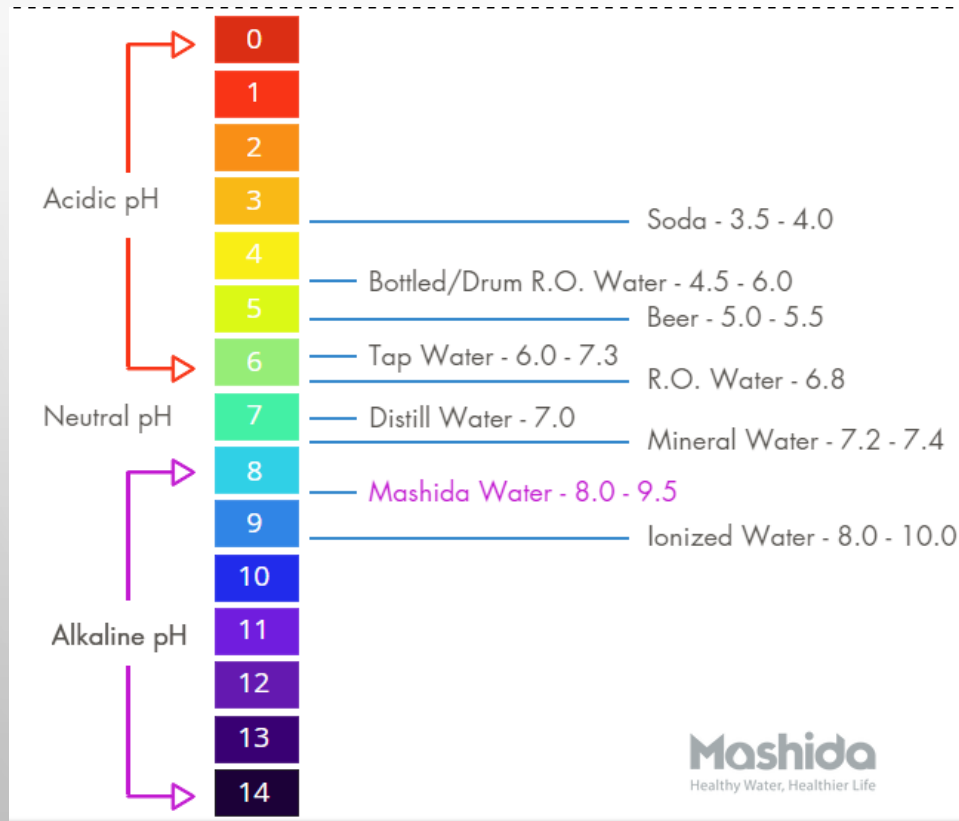
Quality, Space and Cost Savings are the key elements that Mashida delivered and assured.

Our Drinking Water

Since we drink water every day, and are spending 8 hours in the office / work,
do you know what is the pH level of the water you drink daily?

- ☐ Will healthier drinking water benefits you, the management and to all staff?
- ☐ What is your current water system and quality – is it Acidic or Alkaline?
- ☐ Are you constantly managing & monitoring – occupying manpower and space?
- ☐ Cost Saving – can the current running cost be lowered?

ALKALINE, BODY, HEALTH AND YOU



What is pH?

- pH (potential Hydrogen) is a numeric scale used to specify the measurement of acidity or alkalinity on liquid or substance.
- Every part of our body have specific pH.
 Blood 7.35-7.45 Skin 5.5 Stomach 1.5-4.0 Saliva 6.0-7.4 Liver 7.2 etc

What if we continues consumed acidic water daily?

- Our blood pH have to constantly at 7.35 – 7.45 (Slight Alkaline)
- When blood pH dropped acidic, our body will automatically get alkaline minerals from other part of our body to neutralize it.
- This may lead to deficiency of certain minerals to other parts of the body. (example: Calcium from bone) and accumulatively may lead to sickness (degenerative disease)
- Continuously drinking acidic water will only add more acidic, thus more burden to our body

BOTTLED DRINKING WATER



Manage & Monitoring (Manpower)

Commitment again , upfront payment, vendor name, schedule of delivery

Reverse Osmosis – R.O water Type –Acidic



MAN carry bottled water



Occupied of office space



BOTTLED WATER PROCESS



BOTTLED TYPE VS MASHIDA WATER

Normal Bottled Type	MASHIDA Direct Piping Alkaline Dispenser
90% are acidic water	Alkaline water – idea drinking pH 8.0-9.5
Occupied office space	Space saving with modern design
Need a staff to monitor and replenish	Unlimited service and parts provided by Mashida
Need male HERO staff to REFILL	NO more changing bottle
Reused or DAMAGE bottle by vendor	Unlimited supplies of HOT & COLD water
The more staff in the office, the higher monthly running cost incurred	Fixed cost

COST COMPARISON BOTTLED TYPE VS MASHIDA WATER



20 * bottles x RM 8 = **RM 160/per month**

*The more staff the greater usage requires.



FIXED AT RM 119/ per month

YES, WE CAN LOWER DOWN THE COST

Bottle Dispenser	Units	Monthly cost (RM)	Yearly	3 years	5 years		
Bottle Type	20	160	1,920	5,760	9,600		
	30	240	2,880	8,640	14,400		
	40	320	3,840	11,520	19,200		
	50	400	4,800	14,400	24,000		
	60	480	5,760	17,280	28,800		
Units Price (RM)							
8							

Comparison chart (Base on ONE dispenser)

Bottle Type	20	160	1,920	5,760	9,600
Mashida Dispenser	1	119	1,428	4,284	7,140
Total saving		41	492	1,476	2,460


Bottle Dispenser VS Mashida Dispenser Cost Comparison

Usage (units/month)	Bottle dispenser(RM)	Mashida (RM)	Monthly Saving	Yearly	3 years	5 years
20	160	119	41	492	1,476	2,460
30	240	119	121	1,452	4,356	7,260
40	320	119	201	2,412	7,236	12,060
50	400	119	281	3,372	10,116	16,860

YES, WE CAN LOWER DOWN THE COST


Total saving for multi units in company group					
No.of Bottle Dispenser	Usage	Monthly Saving	Yearly	3 years	5 Years
1	20	41	492	1,476	2,460
2	20	82	984	2,952	4,920
3	20	123	1,476	4,428	7,380
4	20	164	1,968	5,904	9,840
5	20	205	2,460	7,380	12,300
6	20	246	2,952	8,856	14,760
7	20	287	3,444	10,332	17,220
8	20	328	3,936	11,808	19,680
Bottle Dispenser VS Mashida Dispenser Cost Comparison					
Bottle unit	Bottle dispenser(RM)	Dispenser unit	Mashida (RM)	Monthly Saving	Yearly
1	160	1	119	41	492
2	320	2	238	82	984
3	480	3	357	123	1476
4	640	4	476	164	1968

THE BENEFIT - MASHIDA

- ✓ Anti-Oxidant (ORP)
 - ✓ Ideal drinking pH between 8.0 – 9.5
 - ✓ Saving up to 50% of your current running cost
 - ✓ Space saving & no more changing bottle
 - ✓ Unlimited supplies of Hot & Cold water
 - ✓ No longer need to remember when to re-order drum/bottle
 - ✓ No worry on bottle sanitation or whether the plastic is BPA free
- 

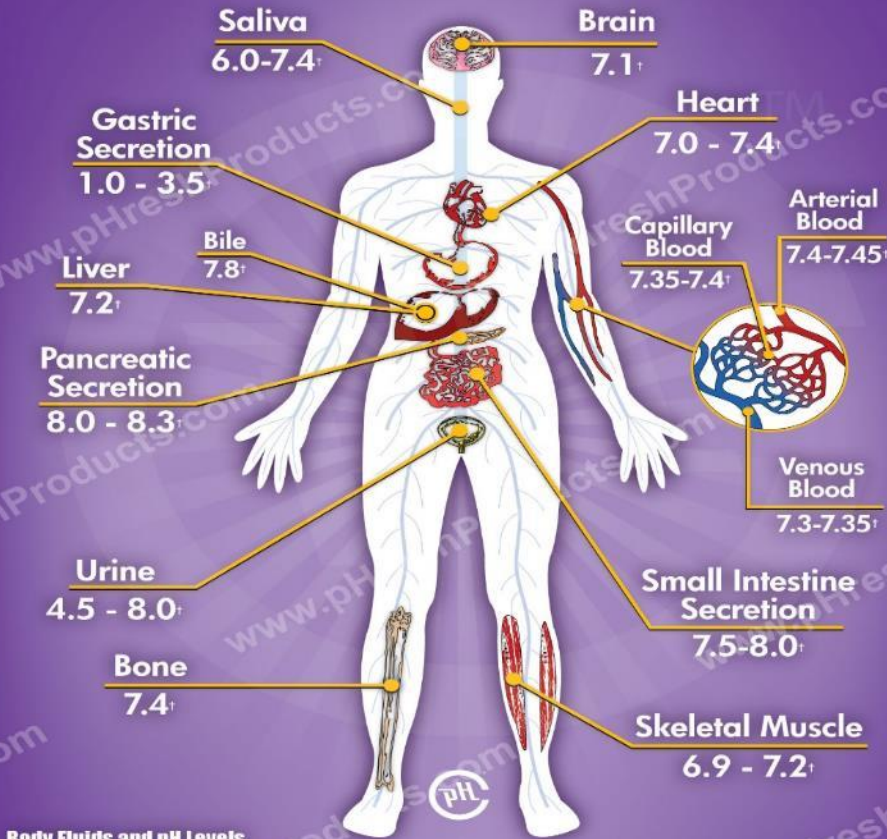
THE ADVANTAGE - MASHIDA

“Mashida Office Pack ” offers

- ✓No Deposit / down payment
 - ✓Monthly rental starting from RM 119
 - ✓No long term tie up commitment period
 - ✓FREE delivery and installation
 - ✓FREE new model upgrading
 - ✓Unlimited service/parts supply during rental period
 - ✓Inclusive of consumable parts i.e.: All filters
 - ✓Only use Korean imported filters
 - ✓Periodically service to optimize performance
 - ✓Quality assured
- 

pH Values of the Human Body

Fluids in the human body function to provide digestion, lubrication, nutrient and oxygen transportation, and protection. To perform these functions, the acid levels must be varied to match the bodily function. Overall levels of acidity or alkalinity are measured on a pH scale and must be carefully controlled in each body fluid.♦



Body Fluids and pH Levels

Saliva, blood and spinal fluid all have a pH of about 7.4. This near neutral level prevents tissue damage that may be caused by levels at either end of the pH scale. Proton pumps that regulate the hydrogen ions in the stomach keep the pH between 1.5 and 3.5. This highly acidic fluid breaks down food and allows digestion to continue. Alterations in any of these systems can lead to serious medical conditions. For example, a pH imbalance in the mouth leads to tooth decay, and alterations in the blood can lead to breathing difficulties. When stomach acid gets beyond the protective sphincter in the esophagus, heart burn and a sour taste may be experienced. The burning sensation is caused by acidic damage to the tissue in the esophagus, and continued acidity may lead to irreversible changes and cancer.♦

References:

- Information from Livestrong.com written by Rich Rodriguez
- NIH Stomach Acid Test
- Elnhurst College pH Scale
- University of Sydney Acid Base Control
- "Journal of Reproduction and Fertility", Functional effects of intracellular pH alteration in the human uterus: simultaneous measurements of pH and force. JH Parratt et al. 1995
- "Yonsei Medical Journal", Measurement of Peritoneal Fluid pH in Patients with Non-Serosal Invasive gastric Cancer. Noh Seung-Moo. 2003
- Goodman & Gilman's The Pharmacological Basis of Therapeutics, Robert F. Reilly et al. 2010

♦These statements have not been evaluated by the Food and Drug Administration.

Our body pH

- Every part of our body have specific pH.
- Blood 7.35-7.45 Skin 5.5 Stomach 1.5-4.0
Saliva 6.0-7.4 Liver 7.2 etc
- If the pH of these part changes, our body will automatically adjust it back to the required pH. By creating the acidic or alkaline minerals or extracting from other part of the body.
- Example: if our body is too acidic (Acidosis), our body will get/produce alkaline minerals such as Calcium, Magnesium, Sodium, Potassium from other part of the body to neutralize it back to required pH.

Why our blood pH affect our health

- Our blood transport all nutrients (oxygen and minerals) or waste product (excessive elements) throughout our whole body.
- So what it deliver determine our health. That is why the pH of the blood is so important to health.
- When we are stressed, lack of exercise, not sleeping well, consume acidic food etc, our blood will turn to acidic (acidosis) and will also cause our body cells become acidic.
- “Disease cannot survive in alkaline environment”

How our body adjust blood pH

- Our blood pH have to constantly at 7.35 – 7.45
- We cannot survive outside this pH
- When our blood pH dropped acidic, our body will automatically get alkaline minerals from other part of our body to neutralize it.
- This may lead to deficiency of certain minerals to other parts of the body. (example: Calcium from bone)
- Accumulatively may lead to sickness (degenerative disease)

How can we neutralize acidic by drinking alkaline water

- Our stomach pH have to stay highly acidic between 1.5 – 4.0 to digest food and kill bacteria & virus.
- When we drink alkaline water, the pH goes up.
- When this happens, there is a feedback mechanism in our stomach to detect this and commands the stomach wall to secrete more hydrochloric acid into the stomach to bring the pH value back below 4.
- Hydrochloric acid is created only when needed because our body cannot keep it or will burn through our body.
- So the cells in our stomach wall must produce it on an instantly-as-needed basis.
- The ingredients in the stomach cell that make hydrochloric acid are carbon dioxide, water, and sodium chloride or potassium chloride.
- “Carbon dioxide + water + chlorine”
- The by-product of making hydrochloric acid is sodium bicarbonate or potassium bicarbonate (alkaline), which goes into blood stream.
- These bicarbonates are the alkaline buffers that neutralize excess acids in the blood.
- Preventing our body to extract alkaline minerals from other part of the body. And lessen our body burden leading to a healthier life.

Contact Us

MASHIDA HOLDINGS (M) SDN BHD (1156484-M)

(FORMERLY KNOW AS MASUTA HOLDING SDN BHD)

B – 7 -3 ,BLOCK B WEST, P J 8 OFFICE SUITES,NO 23 JALAN BARAT,SEKSYEN 8,
46200 PETALING JAYA,SELANGOR.MALAYSIA.

TEL: 603-7966 6613 FAX: 603-7966 6615

E-MAIL:INFO@MASHIDA..COM.MY

WWW.MASHIDA.COM.MY

CARE LINE : 011 2703 8888

